

FRIDAY AUGUST 16, 2013 (140)
SHOW #1: WEST KOOTENAY KENNEL CLUB

RING 1
MRS HONEY GLENDINNING

HOUND [17]

- 8:00 am
 1 Afghan Hound 0-0-1-0
 1 Basenji 0-0-0-1
 2 Beagle 1-0-0-1
 2 Dachshund ML 2-0-0-0
 1 Drever 0-0-1-0
 2 Finnish Spitz 0-2-0-0
 2 Rhod Ridgeback 0-2-0-0
 6 Whippet 3-0-3-0

HOUND GROUP,
BEST IN GROUP, PUPPY

TERRIER [21]

- 4 Border Terrier 1-2-0-1
 2 Cairn Terrier 1-0-1-0
 1 Norwich 0-0-0-1
 1 Schnauzer Mini 0-0-1-0
 5 Scottish Terrier 1-3-0-1
 1 Sealyham Terrier 0-1-0-0
 7 W High White Tr 3-3-1-0

TERRIER GROUP,
BEST IN GROUP, PUPPY

NON SPORTING [16]

- 5 Boston Terrier 3-1-0-1
 2 Bulldog 0-1-0-1
 5 French Bulldog 0-3-1-1
 1 German Pinscher 0-0-1-0
 2 Shiba Inu 0-1-1-0
 1 Shih Tzu 0-0-0-1

NON SPORTING GROUP,
BEST IN GROUP, PUPPY

TOY [22]

- 1 Affenpinscher 0-1-0-0
 4 Cavalier K C 1-3-0-0
 1 Chihuahua: LC 1-0-0-0
 3 Chihuahua: SC 1-2-0-0
 6 Havanese 1-2-0-3
 1 Miniature Pin 0-0-0-1
 1 Papillon 1-0-0-0
 1 Poodle Toy 0-0-1-0
 1 Pug 0-0-1-0
 3 Yorkshire Terrier 1-2-0-0

TOY GROUP,
BEST IN GROUP, PUPPY

RING 2
MR HAROLD PYBUS

WORKING [15]

- 8:00 am
 1 Bernese Mtn 0-1-0-0
 2 Boxer 0-1-1-0
 1 Bullmastiff 0-1-0-0
 2 Great Dane 0-1-1-0
 1 Great Pyrenees 1-0-0-0
 1 Leonberger 0-1-0-0
 6 Newfoundland 1-3-1-1
 1 Rottweiler 0-0-1-0

WORKING GROUP,
BEST IN GROUP, PUPPY

HERDING [19]

- 3 Australian Shep 1-2-0-0
 2 Bearded Collie 1-1-0-0
 3 Belgian Shep 1-2-0-0
 1 Collie Smooth 0-0-1-0
 3 German Shep 0-0-1-2
 1 Iceland Sheep 0-0-1-0
 1 Old Eng Sheep 0-0-1-0
 5 Shetland Sheep 1-3-1-0

HERDING GROUP,
BEST IN GROUP, PUPPY

SPORTING [30]

- 1 Retriever F C 0-0-1-0
 4 Ret Golden 0-2-2-0
 12 Ret Labrador 4-4-2-2
 2 Ret N S D T 1-0-0-1
 1 Setter English 0-0-0-1
 2 Span Am Cocker 1-1-0-0
 2 Spaniel Brittany 0-2-0-0
 5 Span Eng Spring 0-4-1-0
 1 Weimaraner 0-0-0-1

SPORTING GROUP,
BEST IN GROUP, PUPPY

BEST IN SHOW #1
RESERVE BEST IN SHOW
BEST PUPPY IN SHOW

OBEDIENCE
CORRECTION MATCH

FRIDAY evening after BIS
 Entry Fee is \$5.

All Breed Catalogues
 will be available from 6:30 am Friday August 16
 from the club table.
 Please bring receipt with armband number on it.

OVERNIGHT EXHIBITOR PARKING 2013

NO RESERVATIONS: ALL WILL BE A FIRST COME-FIRST SERVED BASIS
 Exhibitors who wish to camp together must come in together. Hookups are not available. Self contained vehicles only please. There are no showers available.

All vehicles must be parked within the boundaries of the rented site.
 To protect the grass all vehicles parked in overnight parking must remain for the entire show. Extra vehicles to remain outside the fence.

Fee is \$50./weekend or \$20./day. Porta Potties will be on the grounds.

There is a \$10. damage deposit that will be returned to exhibitors leaving their campsite in the same condition as when they arrived.

Day tents \$5./day All funds payable in Canadian dollars payable at entrance gate.

Access to the grounds will be available Thursday August 15 2013 after 12:00 noon.
 Please, no entries prior to this time. Vehicles must vacate 1 hour after BIS on Sunday.
 Thank-you

FRIDAY AUGUST 16, 2013 (142)
SHOW #2: WEST KOOTENAY KENNEL CLUB

RING 1
MR HAROLD PYBUS

TOY [21]

- 1:00 pm
 1 Affenpinscher 0-1-0-0
 4 Cavalier K. C. 1-3-0-0
 1 Chihuahua: L C 1-0-0-0
 3 Chihuahua: S C 1-2-0-0
 5
 Havanese 1-1-0-3
 1 Mini Pinscher 0-0-0-1
 1 Papillon 1-0-0-0
 1 Poodle Toy 0-0-1-0
 1 Pug 0-0-1-0
 3 Yorkshire Terrier 1-2-0-0

TOY GROUP,
BEST IN GROUP, PUPPY

NON SPORTING [16]

- 5 Boston Terrier 3-1-0-1
 2 Bulldog 0-1-0-1
 5 French Bulldog 0-3-1-1
 1 German Pinscher 0-0-1-0
 2 Shiba Inu 0-1-1-0
 1 Shih Tzu 0-0-0-1

NON SPORTING GROUP,
BEST IN GROUP, PUPPY

TERRIER [21]

- 4 Border Terrier 1-2-0-1
 2 Cairn Terrier 1-0-1-0
 1 Norwich 0-0-0-1
 1 Schnauzer Mini 0-0-1-0
 5 Scottish Terrier 1-3-0-1
 1 Sealyham Terrier 0-1-0-0
 7 W Highland W Tr 3-3-1-0

TERRIER GROUP,
BEST IN GROUP, PUPPY

HOUND [18]

- 1 Afghan Hound 0-0-1-0
 1 Basenji 0-0-0-1
 3 Beagle 1-1-0-1
 2 Dachshund M L 2-0-0-0
 1 Drever 0-0-1-0
 2 Finnish Spitz 0-2-0-0
 2 Rhod Ridgeback 0-2-0-0
 6 Whippet 3-0-3-0

HOUND GROUP,
BEST IN GROUP, PUPPY

RING 2
MRS HONEY GLENDINNING

SPORTING [32]

- 1:00 pm
 1 Retriever Flat-C 0-0-1-0
 4 Retriever Golden 0-2-2-0
 12 Ret Labrador 4-4-2-2
 3 Ret N. S. D.T. 2-0-0-1
 1 Setter English 0-0-0-1
 2 Span Am Cocker 1-1-0-0
 2 Spaniel Brittany 0-2-0-0
 6 Span Eng Spring 0-5-1-0
 1 Weimaraner 0-0-0-1

SPORTING GROUP,
BEST IN GROUP, PUPPY

HERDING [19]

- 3 Australian Shep 1-2-0-0
 2 Bearded Collie 1-1-0-0
 3 Belgian Shep 1-2-0-0
 1 Collie Smooth 0-0-1-0
 3 German Shep 0-0-1-2
 1 Iceland Sheep 0-0-1-0
 1 Old Eng, Sheep 0-0-1-0
 5 Shetland Sheep 1-4-1-0

HERDING GROUP,
BEST IN GROUP, PUPPY

WORKING [15]

- 1 Bernese Mtn 0-1-0-0
 2 Boxer 0-1-1-0
 1 Bullmastiff 0-1-0-0
 2 Great Dane 0-1-1-0
 1 Great Pyrenees 1-0-0-0
 1 Leonberger 0-1-0-0
 6 Newfoundland 1-3-1-1
 1 Rottweiler 0-0-1-0

WORKING GROUP,
BEST IN GROUP, PUPPY

BEST IN SHOW #2
RESERVE BEST IN SHOW
BEST PUPPY IN SHOW



1944 COLUMBIA AVENUE CASTLEGAR BC V1N 2W7
 250-365-8444

ASK FOR WKCC RATES \$99
 GROUP RATE 208954
 PET FRIENDLY.

SALES_CASTLEGAR@SANDMAN.CA
 WWW.SANDMANHOTELS.CA/HOTELS/CASTLEGAR

ACCOMMODATIONS

- Quality Inn-Monty Carlo 250-365-2177 (\$10. pet fee)
 Cozy Pines Motel 250-365-5613 (No Pet Fee)
 Travelodge-Fireside Inn 250-365-2128 (Pet Fee-Small dogs only)
 Super 8 250-365-2700 (Ask for Pet fee-Max 3 dogs)

CAMPSITES

Pass Creek Campground 250-304-4602

**SATURDAY AUGUST 17, 2013 (150)
SHOW #3: WEST KOOTENAY KENNEL CLUB**

**RING 1
MR MEL SARANCHUK
SPORTING [38]**

9:00 am
 1 Retriever Flat-Coated 0-0-1-0
 7 Retriever Golden 0-1-2-0
 Bp 3-1
 14 Retriever Labrador 4-4-2-2
 Bp 0-2
 4 Retriever N. S. Duck Tolling 2-0-0-1
 Bp 0-1
 1 Setter English 0-0-0-1
 2 Spaniel American Cocker 1-1-0-0
 2 Spaniel Brittany 0-2-0-0
 6 Spaniel English Springer 1-4-1-0
 1 Weimaraner 0-0-0-1

SPORTING GROUP,
BEST IN GROUP, PUPPY,
BABY PUPPY

NON SPORTING [15]

10:50 am
 5 Boston Terrier 3-1-0-1
 1 Bulldog 0-0-0-1
 5 French Bulldog 0-3-1-1
 1 German Pinscher 0-0-1-0
 2 Shiba Inu 0-1-1-0
 1 Shih Tzu 0-0-0-1

NON SPORTING GROUP,
BEST IN GROUP, PUPPY

**RING 1 Noon MRS ANDREA
CARPENTER
SWEEPSTAKES**

3 JUNIOR PUPPY MALES
 2 SENIOR PUPPY MALES
 2 YEARLING MALES
 9 JUNIOR PUPPY FEMALES
 6 SENIOR PUPPY FEMALES
 6 YEARLING FEMALES
 BEST IN SWEEPSTAKES

1 7 TO 9 YEARS
 1 9 TO 11 YEARS
 BEST IN SWEEPSTAKES

**RING 1
MR MEL SARANCHUK
HOUND [18]**

1:15 pm
 1 Afghan Hound 0-0-1-0
 1 Basenji 0-0-0-1
 3 Beagle 1-1-0-1
 2 Dachshund Mini Long H. 2-0-0-0
 1 Drever 0-0-1-0
 2 Finnish Spitz 0-2-0-0
 2 Rhodesian Ridgeback 0-2-0-0
 6 Whippet 3-0-3-0

HOUND GROUP,
BEST IN GROUP, PUPPY

BEST BABY PUPPY IN SHOW BEST
IN SHOW
RESERVE BEST IN SHOW
BEST PUPPY IN SHOW

**RING 2
MRS LINDA SARANCHUK
HERDING [19]**

9:00 am
 3 Australian Shepherd 1-2-0-0
 2 Bearded Collie 1-1-0-0
 3 Belgian Shepherd Dog 1-2-0-0
 1 Collie Smooth 0-0-1-0
 3 German Shepherd Dog 0-0-1-2
 1 Iceland Sheepdog 0-0-1-0
 1 Old English Sheepdog 0-0-1-0
 5 Shetland Sheepdog 1-3-1-0

HERDING GROUP,
BEST IN GROUP, PUPPY

TOYS [21]

10:05 am
 1 Affenpinscher 0-1-0-0
 4 Cavalier King Charles 1-3-0-0
 1 Chihuahua: Long Coat 1-0-0-0
 3 Chihuahua: Short Coat 1-2-0-0
 5 Havanese 1-1-0-3
 1 Miniature Pinscher 0-0-0-1
 1 Papillon 1-0-0-0
 1 Poodle Toy 0-0-1-0
 1 Pug 0-0-1-0
 3 Yorkshire Terrier 0-3-0-0

TOY GROUP,
BEST IN GROUP, PUPPY

TERRIER [24]

11:15 am
 5 Border Terrier 1-2-1-1
 2 Cairn Terrier 1-0-1-0
 1 Norwich 0-0-0-1
 1 Schnauzer Miniature 0-0-1-0
 5 Scottish Terrier 1-3-0-1
 1 Sealyham Terrier 0-1-0-0
 1 Soft Coated Wheaten Tr 0-1-0-0

**RING 2 Noon xxxxxxxxxxxx
JUNIOR HANDLING**

SENIOR OPEN
 INTERMEDIATE OPEN
 JUNIOR OPEN
 PEEWEES
 SENIOR NOVICE
 INTERMEDIATE NOVICE
 JUNIOR NOVICE
 BEST OVERALL

**RING 2
MRS LINDA SARANCHUK**

1:00 pm
 8 West Highland White Tr 3-3-1-0
 Bp 0-1

TERRIER GROUP,
BEST IN GROUP, PUPPY,
BABY PUPPY

JUNIOR HANDLING

Complete entries must be received by the
show secretary 1 hour prior to the posted
judging time.

**RING 3
MR BRUCE FRASER
WORKING [15]**

11:00 am
 2 Boxer 0-1-1-0
 1 Bullmastiff 0-1-0-0
 2 Great Dane 0-1-1-0
 2 Great Pyrenees 1-0-0-0
 Ex 0-1
 1 Leonberger 0-1-0-0
 6 Newfoundland 1-3-1-1
 1 Rottweiler 0-0-1-0

WORKING GROUP,
BEST IN GROUP, PUPPY

**RING 4-Trial 1 Rally O [5]
MR BRUCE FRASER**

8:00 am
 Walk thru
 4 Rally Novice B 702,704,703,706
 1 Rally Novice A 701

**RING 4 Trial 2 Rally O [4]
MRS NORMA SCHAFFER**

9:30 am
 Walk thru
 3 Rally Novice B 702, 704, 706
 1 Rally Novice A 701

**RING 5 Trial 2 Obedience [4]
MRS NORMA SCHAFFER**

8:00 am
 1 Utility A 603
 1 Open B 605
 1 Open A 602
 1 Novice Intermediate 606

**RING 5-Trial 1 Obedience [8]
MR BRUCE FRASER**

9:00 am
 1 Utility B 607
 1 Utility A 603
 2 Open B 605, 607
 1 Open A 602
 1 Novice Intermediate 606
 1 Novice A 604
 1 Pre Novice 601

**Day of trial entries, on a paper entry form, may be accepted on the day of the trial, no later than 1 hour before the start of the first Obedience Activity of the day. This is provided the dog is already entered Obedience or Rally-O and the event type mentioned prior corresponds to the day of trial entry. Illustration: To add an obedience entry onto an existing Obedience entry for these Trials for the same dog is acceptable. To add an Rally O entry onto an existing Rally O entry for these Trials for the same dog is acceptable. Example. The dog is entered in 2 trials and you wish to add one or two trials on the original entry.

Acceptance of the entry is at the discretion of the show secretary and obedience chair and subject to the influences of scheduling and amount of judges time available.

BBQ
JOIN US FOR FUN, FESTIVITIES AND RAFFLE DRAWS
 Saturday Night 5:00 pm only \$8.00/plate Variety of Salads, buns & butter, baked potatoes, desserts BYOM (bring your own meat) cutlery & plates BBQ's will be set up for use
 Please purchase your tickets from the hospitality table Friday or Saturday before 3:00 pm

SUNDAY AUGUST 18, 2013 (142)
SHOW #4: WEST KOOTENAY KENNEL CLUB

RING 1
MRS LINDA SARANCHUK
HOUND [18]

8:00 am	
1 Afghan Hound	0-0-1-0
1 Basenji	0-0-0-1
3 Beagle	1-1-0-1
2 Dachshund Mini Long H.	2-0-0-0
1 Drever	0-0-1-0
2 Finnish Spitz	0-2-0-0
2 Rhodesian Ridgeback	0-2-0-0
6 Whippet	3-0-3-0

HOUND GROUP,
 BEST IN GROUP, PUPPY

SPORTING [36]

1 Retriever Flat-Coated	0-0-1-0
8 Retriever Golden	0-2-2-0
	Bp 3-1
14 Retriever Labrador	4-4-2-2
	Bp 02
3 Retriever N. S. D. Tolling	1-0-0-1
	Bp 0-1
1 Setter English	0-0-0-1
2 Spaniel American Cocker	1-1-0-0

6 Spaniel English Springer	1-4-1-0
1 Weimaraner	0-0-0-1

SPORTING GROUP,
 BEST IN GROUP, PUPPY,
 BABY PUPPY

WORKING [13]

2 Boxer	0-1-1-0
1 Bullmastiff	0-1-0-0
2 Great Dane	0-1-1-0
1 Great Pyrenees	1-0-0-0
6 Newfoundland	1-3-1-1
1 Rottweiler	0-0-1-0

WORKING GROUP,
 BEST IN GROUP, PUPPY

BEST BABY PUPPY IN SHOW
 BEST IN SHOW
 RESERVE BEST IN SHOW
 BEST PUPPY IN SHOW

RING 2
MR MEL SARANCHUK
NON SPORTING [16]

8:00 am	
5 Boston Terrier	3-1-0-1
2 Bulldog	0-1-0-1
5 French Bulldog	0-3-1-1
1 German Pinscher	0-0-1-0
2 Shiba Inu	0-1-1-0
1 Shih Tzu	0-0-0-1

NON SPORTING GROUP,
 BEST IN GROUP, PUPPY

TERRIER [23]

5 Border Terrier	1-2-1-1
2 Cairn Terrier	1-0-1-0
1 Norwich Terrier	0-0-0-1
1 Schnauzer Miniature	0-0-1-0
5 Scottish Terrier	1-3-0-1
1 Sealyham Terrier	0-1-0-0
8 West Highland White Tr	3-3-1-0

TERRIER GROUP,
 BEST IN GROUP, PUPPY,
 BABY PUPPY

HERDING [19]

1 Australian Shepherd	1-0-0-0
2 Bearded Collie	1-1-0-0
3 Belgian Shepherd Dog	1-2-0-0
1 Collie Smooth	0-0-1-0
3 German Shepherd Dog	0-0-1-2
1 Iceland Sheepdog	0-0-1-0
1 Old English Sheepdog	0-0-1-0
5 Shetland Sheepdog	1-3-1-0

HERDING GROUP,
 BEST IN GROUP, PUPPY

RING 3
MRS BRUCE FRASER
TOY [19]

11:00 am	
1 Affenpinscher	0-1-0-0
4 Cavalier King Charles	1-3-0-0
1 Chihuahua: Long Coat	1-0-0-0
3 Chihuahua: Short Coat	1-2-0-0
6 Havanese	1-2-0-3
1 Miniature Pinscher	0-0-0-1
1 Papillon	1-0-0-0
1 Poodle Toy	0-0-1-0
1 Pug	0-0-1-0

TOY GROUP,
 BEST IN GROUP, PUPPY

RING 4-Trial 3 Rally O [4]
MR BRUCE FRASER

8:00 am	
Walk thru	
3 Rally Novice B	702,704,706
1 Rally Novice A	701

RING 4 Trial 4 Rally O [3]
MRS NORMA SCHAFFER

9:30 am	
Walk thru	
2 Rally Novice B	702,706
1 Rally Novice A	701

RING 5 Trial 4 Obedience [5]
MRS NORMA SCHAFFER

8:00 am	
1 Utility A	603
1 Utility B	607
1 Open B	605, 607
1 Open A	602
1 Novice Intermediate	606

RING 5-Trial 3 Obedience [5]
MR BRUCE FRASER

9:10 am	
1 Utility A	603
1 Open B	605
1 Open A	602
1 Novice Intermediate	606
1 Novice A	604

Armbands

to be picked up at ringside each day.

Move up forms

must be returned to the show secretary 1 hour before the start of all judging for the day (ie. before 0700.

A reminder that posted times indicate that judging of the class will not begin before the posted time. Judging of Best of Breed dogs in group will not overlap, however they may for Puppy in Group.

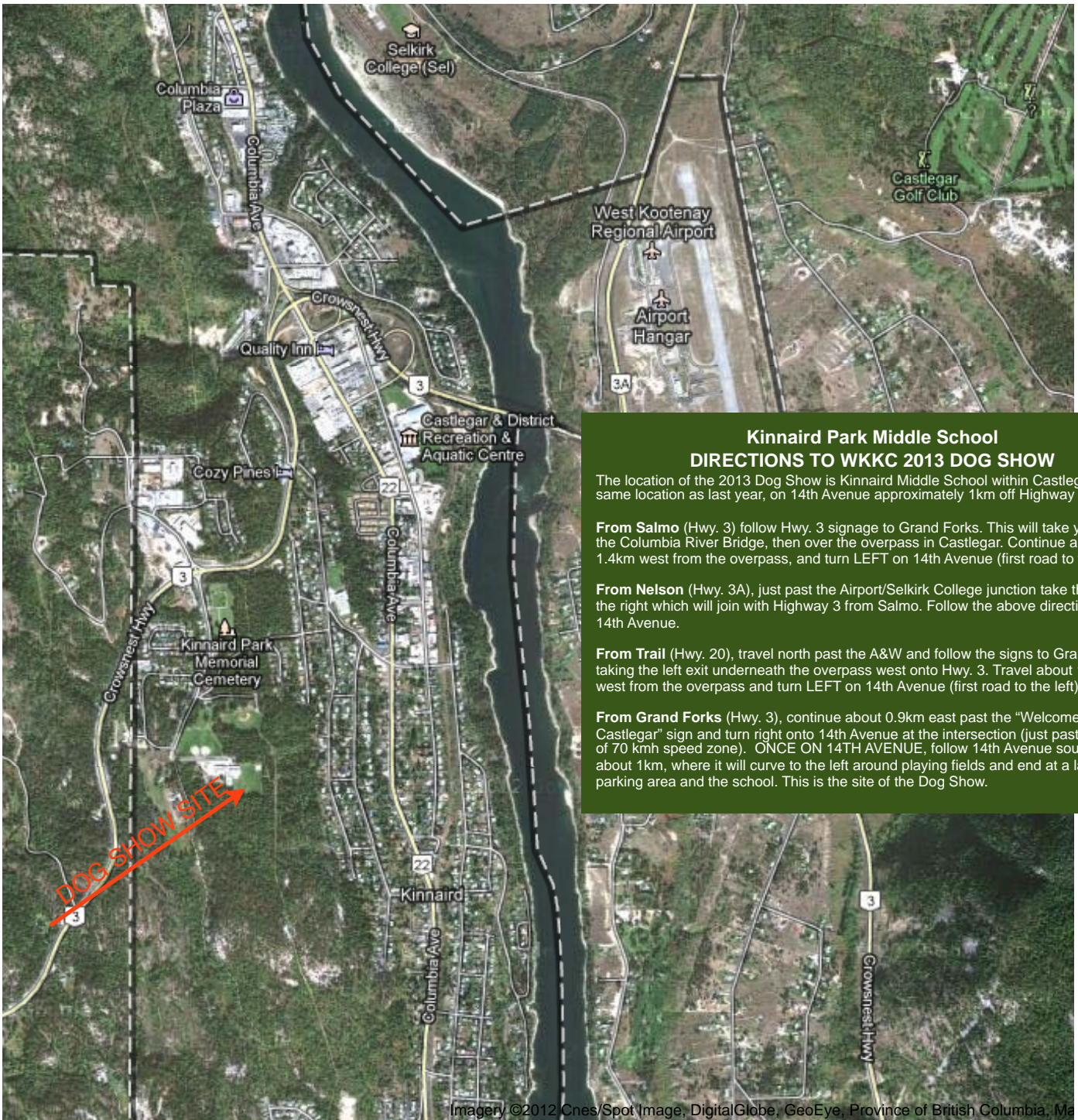


Reminders:

Exhibitors are expected to keep their space clean. Fire Lanes/Aisles must be kept clear. Exhibitors are liable for all costs relate to cleaning or damage caused by a dog(s) under their control. Failure to exercise appropriate diligence may result in a loss of show privileges.

Dogs are not permitted in the seating area of the Concession or in line-ups for food.

-No commercial activity may occur within any space without the express permission of the WKKC show chairperson.



Kinnaird Park Middle School
DIRECTIONS TO WKKC 2013 DOG SHOW

The location of the 2013 Dog Show is Kinnaird Middle School within Castlegar, at the same location as last year, on 14th Avenue approximately 1km off Highway 3.

From Salmo (Hwy. 3) follow Hwy. 3 signage to Grand Forks. This will take you across the Columbia River Bridge, then over the overpass in Castlegar. Continue about 1.4km west from the overpass, and turn LEFT on 14th Avenue (first road to the left).

From Nelson (Hwy. 3A), just past the Airport/Selkirk College junction take the exit to the right which will join with Highway 3 from Salmo. Follow the above directions to 14th Avenue.

From Trail (Hwy. 20), travel north past the A&W and follow the signs to Grand Forks, taking the left exit underneath the overpass west onto Hwy. 3. Travel about 1.4km west from the overpass and turn LEFT on 14th Avenue (first road to the left).

From Grand Forks (Hwy. 3), continue about 0.9km east past the "Welcome to Castlegar" sign and turn right onto 14th Avenue at the intersection (just past the start of 70 kmh speed zone). ONCE ON 14TH AVENUE, follow 14th Avenue south for about 1km, where it will curve to the left around playing fields and end at a large parking area and the school. This is the site of the Dog Show.